

# Sarjeant Gallery Te Whare o Rehua Whanganui

38 Taupō Quay  
Whanganui 4500  
New Zealand

Phone 06 349 0506  
www.sarjeant.org.nz

Sarjeant Gallery is a cultural facility of the Whanganui District Council

Contact: Education Officer  
Sietske Jansma  
(06) 349 3276

Email: education@sarjeant.org.nz

## EDUCATION

Term Four: 22nd July—27 September 2019



A selection of portraits of Whanganui women from *Her Indoors*  
Julia Holden

### Julia Holden: Her Indoors

until 2 February 2020

A suite of over forty new paintings by inter-disciplinary artist Julia Holden. The portraits combine to form a singular collective portrait of the women Holden met whilst artist-in-residence at Tylee Cottage in Whanganui.

The exhibition also includes audio recordings by the participants that respond to the theme of women's suffrage, the project provides a snap shot of what it means to be a woman today, 125 years after women got the vote in New Zealand. These women range in age from their teens through to their 70's.

Generously supported by   
ARTS COUNCIL OF NEW ZEALAND TOI AOTEAROA

### Hands-on practical sessions:

#### Self-Portraits – Years NE-10

This practical can either be painting, printmaking or drawing. We will discuss the proportions of the face before students create their own self-portrait. They can use a mirror or work from a photograph to draw their portrait.

Curriculum links: *Visual Arts*

#### Artist talk and/or workshop – Years 9/10

Julia is available by arrangement to give an artist talk to students in her exhibition. This is a great opportunity for students to meet, ask questions and learn from an expert.

Curriculum links: *Visual Arts*

### Christmas Pop-Up Cards! – Years NE-8

Available all term

Come and create your own funky pop-up Christmas cards to take away with you. Suitable for all ages!

Curriculum links: *Visual Arts*



samples

Education Programmes/Services are **FREE!**

### Turn of a Century

until 9 February, 2020

On September 6 this year the gallery celebrated one hundred years since it opened to the public. To recognise this milestone this exhibition brings together a broad range of historical and contemporary works from the collection alongside some exciting newly commissioned works. A group of artists who have had a strong connection with the gallery were invited to respond to the empty spaces of the historic building in Pukenui/Queen's Park. These works offer a unique 'behind the scenes' view of the gallery as it is before it undergoes its transformation. The exhibition includes photography and intriguing new sculptural work using unexpected materials salvaged from the building.

### Hands-on practical sessions:

#### Print a constellation of shapes -Years NE+

We will explore and discuss the many different geometric shapes and patterns that appear in the artworks featured in the exhibition. Students will create their own shapely composition by drawing and cutting out shapes and screen printing them onto a tote bag that they can be proud of.

Curriculum links: *Visual Arts, Maths; geometry*

#### Paper orb - Years 5+

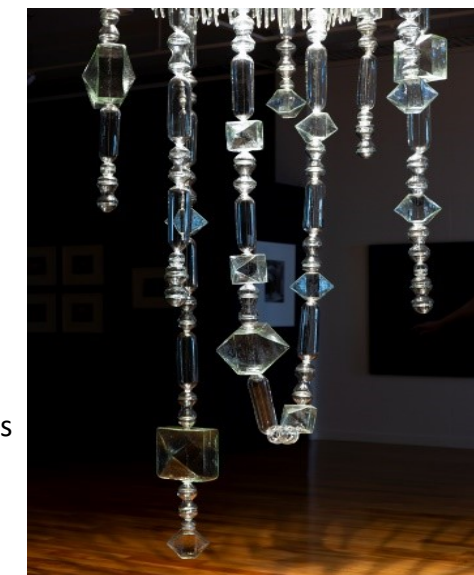
After exploring the many geometric shapes and patterns that are present in this exhibition we will explore how shapes are important components of architecture. Students will make their own 3D orb using light card, these can be decorated or threaded with string to become a hanging orb perfect for Christmas.

Curriculum links: *Visual Arts, Maths; geometry*

#### Flowers -Years NE+

Focusing on two works made over 400 years apart featuring flowers, one being a Dutch still life and the other a contemporary photograph, we will discuss the different styles and meaning behind these works. Students will explore the types of flowers, their shapes and structure (stem, leaf, bud and blossom). This practical can be either painting, printmaking or scratch-art (students scratch through a layer of black to reveal colours underneath.)

Curriculum links: *Visual Arts, Science; the living world*



Detail from *The Friends of the Sarjeant Centenary Chandelier*  
Crystal Chain Gang



sample



sample

Don't forget!  
Our wonderful collection is  
available to explore online visit

Sarjeant.org.nz



Flower Idol (Floros)  
Richard Orjis



Flower study  
Jan Baptiste  
mid 17th century