

TERM FOUR

15 October – 20 December 2012

As you will all now know the Sarjeant Gallery has been designated as an Earthquake Prone Building but we can confirm that it is business as usual at the Gallery. We are still offering our wonderful FREE Education Programmes and have taken delivery of high quality sturdy tables for students to shelter under in the unlikely event of an earthquake.

Operation Fizz!

A painting expedition by Glenn Burrell

27 October – 24 February

In 2011 Glenn Burrell undertook a three month residency at Tylee Cottage. During that time he began to create a series of objects made entirely from paint, including flippers, skis, gumboots, bicycle componentry and an inflatable boat. All of these objects have been tested by Burrell in the field, with the 'painting expedition' documented with video and photographic footage.

Hands-on practical sessions:

Is he a Painter or a Sculptor?

Yr 3+

Students will explore Glenn's exhibition and discuss his work, and consider the question is he a painter or a sculptor? They will work in groups and use a large amount of brightly coloured play dough to recreate an everyday object. Their large floppy sculptures will be photographed, printed and sent back to school.



Glenn Burrell
Gumboot detail

Old New World

Mary Macpherson

8 December - 10 February

A photographic study of the changing face of small town New Zealand. This exhibition has been curated and toured by Lopdell House Gallery.

Hands-on practical sessions:

Photograph Queen's Park

Yr 4+

Working in small groups students will use the Gallery's digital cameras to photograph what's exciting and interesting around Queen's Park. They will focus on composition and light. Students photographs will then be put on a special page on our education blog.



Mary Macpherson
Old New World-Queenstown, Otago, 2010

Education Programmes/Services are **FREE!** and are funded by the Ministry of Education Learning Outside the Classroom initiative (LEOTC) & Wanganui District Council

Please note some dates may be subject to change.

Something in the Water: Wanganui artists from the collection

24 November 2012 – 3 March 2013

Wanganui is fortunate to have been home to an extraordinary range of artists working in a broad spectrum of styles and media. This exhibition brings together a selection of fine works from our permanent collection displaying the best artistic talent to have emerged from the river city.

Hands-on practical sessions:

Still Life & Architecture

Yr 4+

Using local artist Sue Cooke's works as inspiration students will create still life works that utilise the external and internal architectural details of the Sarjeant Gallery. Students will be able to consider composition of a still life work and different drawing techniques that they can use.

Plants and Patterns

Yr 1+

Using Vivian Smith's plant studies as inspiration, students will create their own artwork; these can be cards, prints or wrapping paper – great for Christmas!

Queen's Park Amazing Day

Available all of Term 4

Students will take part in a variety of fun interactive hands on activities in Queen's Park, the Sarjeant Gallery and the Whanganui Regional Museum.

Kiwi Christmas Fun

Available all of Term 4

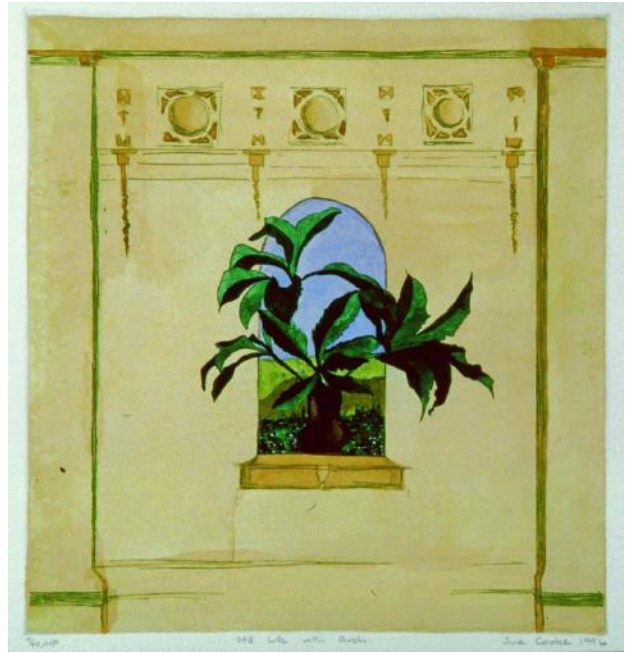
Yr 1+

Come and join us for some Kiwi Christmas fun! Students will learn the technique of Metal Repousse using aluminium pie plates and enjoy making a Christmas artwork with a kiwi twist.

Rural Schools Cluster day

Join up with the schools in your cluster and come to Queen's Park for a day of fun and learning!

Sessions are customised to suit your time frame and are based at the Whanganui Regional Museum and the Sarjeant Gallery.



Sue Cooke
Still Life with Arch



Vivian Smith
Iris Design