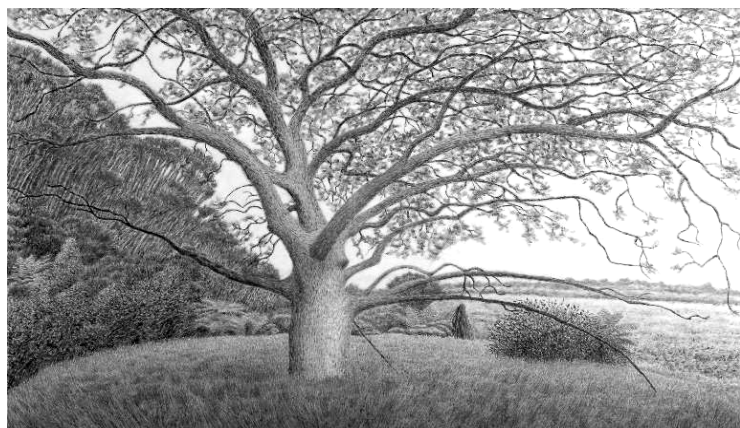


Contact: Andrea Gardner or Sietske Jansma
(06) 349 0543 ext 8276 Email: education@queenspark.org.nz
www.sarjeant.org.nz

TERM TWO

02 May – 15 July 2011



SONG OF THE WOODS

until 12 June

Drawing on the Sarjeant Gallery's collection and supplemented with loaned material, this exhibition features a wide range of works investigating trees: quietly bucolic photographs and paintings from the early 20th century through to contemporary works by a range of artists including photographers Peter Peryer, Ann Shelton and Paul Johns; painters Johanna Pegler and Andrew McLeod; and sculptors Andrea du Chatenier and Andrea Gardner.

This exhibition lends itself to a huge range of hands-on art sessions. Through drawing, painting, collage, printmaking, mixed media or sculpture, sessions can link the topic of trees with many subjects: environmental studies, ecology, creative writing, poetry, drama, art history, mythology, fantasy, colour mixing etc.

Curriculum links: The Arts (Visual Arts, Drama), English, Science (the Living World, Planet Earth and Beyond, Physical World)

Johanna Pegler, *Landed*, 2010

WOOD WORKS from the collection

The Sarjeant Gallery has a beautiful array of works made from wood in its collection. To complement the *Song of the Woods* exhibition, this small selection brings to light some fine examples that show how diverse this medium can be. Included are, a rustic bench seat made from driftwood, a signpost work, and clever wall works.

Hands-on practical session: Come and build a small 3-Dimensional artwork using wood and paint.

Curriculum Links: Visual Arts

until 29 May



War Memorial Hall, Wanganui. Photograph: Paul McCredie

LONG LIVE THE MODERN

New Zealand's New Architecture 1904 – 1984

An exhibition that explores New Zealand's modern architecture, through original drawings and plans of a range of public and private buildings, including houses, halls, theatres, churches and office buildings. Also included are photographs and architectural models. This is a great exhibition for students to see how buildings are designed and to study Wanganui's own modern architectural treasures, such as the War Memorial Hall which is in walking distance to the gallery. An exhibition curated by Julia Gatley and Bill McKay from the University of Auckland School of Architecture and Planning and toured by the Gus Fisher Gallery.

Hands-on practical session:

- Be an Architect! Design and build your own 3-D model building.
- Paint or draw your dream building!
- Be a Writer! Come use your creative pen. Write poetry or fiction imagining yourself living or working in one of these special buildings.

Curriculum Links: Visual Arts, English

until 22 May



Warren Viscoe,
Taxidermist



TESLA STUDIOS the Mark Lampe Years

A selection of stunning black and white photographs taken by Tesla Studios, which was opened by Mark Lampe in Wanganui in 1908. The images capture Wanganui's social and architectural history from the 1930s – 1950s. This exhibition was curated by Libby Sharpe of the Whanganui Regional Museum and had its debut in 1999. The current exhibition offers viewers a chance to see these engaging images once more. A great chance for students to engage with Wanganui's history.

Curriculum Links: Visual Arts, Social Sciences
NCEA Photography

Mark Lampe, Wanganui Girls' College dining room, "Boarders at Table", 1946

ANS WESTRA Photography

Ans Westra is one of New Zealand's most respected and accomplished photographers. Westra has had a long and rich association with the Whanganui region since she made her first trip up the Whanganui River in 1960, shortly after arriving in New Zealand from her native Holland. Since that time Westra has continued to photograph the people of the river and also at nearby Ratana. This exhibition includes a range of photographs from the 1960s through to the 1990s. Secondary students come and see how Ans has used the camera to document everyday life in the Whanganui Region with a focus on the settlements along the Whanganui River.

Curriculum links: Visual arts and Social Sciences
NCEA Photography

21 May – 28 August



Ans Westra
Pipiriki

SLEIGHT OF HAND

The Port Nelson Suter Biennale

This is an exhibition of contemporary art that advocates for a return to traditional art values. Sleight of Hand is a term adopted from magic and describes a set of tricks that are performed so deftly that the manner of the execution can not be observed. It aptly describes the sensation created by the work of eight New Zealand artists who combine technical skill with visual theory to create a range of illusory effects. The artists include painters Peter Gibson Smith, Mervyn Williams, Emily Wolfe and Julia Morison; printmaker, Sam Harrison; sculptors, Joe Sheehan and John Ward Knox and photographer Megan Jenkinson.

Hands-on practical session:

-Explore the art of optical illusions including the magic of spirographs. Students can create their own visual illusion through painting or drawing.

-Experience printmaking! Create surprising and exciting abstract designs using rotational techniques.

Curriculum links: Visual Arts, Maths (Geometry)

NCEA Painting, Photography, Printmaking

4 June – 21 August



Jo Sheehan
On my way home, 2010

2011 CAREY SMITH & CO LTD WHANGANUI ARTS REVIEW

This exhibition is an annual event in our programme. Featuring work in a variety of media from a broad range of people living in the Whanganui region, from high school students to Senior Citizens. This exhibition is an excellent opportunity for students to see the wealth of creative talent that their local community has to offer.

2 July – 4 September

**All sessions are suitable for Years 0–13 unless specified.
Tour = 40–60 minutes, Tour & practical = 90 minutes**

Education Programmes/Services are FREE! and are supported by the