



Paratene Matchitt
Untitled Sculpture

SURFACE TENSION

Yr 0-8

Explore this exhibition of uneasy works from the Permanent Collection, including sculptural work by Warren Viscoe, Paratene Matchitt and Llew Summers, paintings by Bill Hammond, Tony Fomison, Jeffrey Harris and a selection of prints and drawings. Students could create their own work or work as a class to create an artwork based on the work 'State of Mind' by artist Richard Killeen. *This artwork comprises of many small hand drawn faces with different expressions.*

until 25 October

WANGANUI GLASS 2009

Yr 4-8

As part of this year's glass festival, the Sarjeant Gallery is pleased to present a selection of work by glass artists who are currently living and working in Wanganui. The exhibition includes the work of students, recent graduates and well-established practitioners, all of whom explore the medium in challenging and engaging ways. Students will learn about the different processes that artists use and make a small glass charm to take home.

until 22 November

BILL CULBERT: 180° x 2 Whanganui

Yr 4-13

A dynamic site specific installation in the gallery's dome area. The exhibition features eight large scale photographs of sites around Wanganui illuminated by an impressive 'drawing in light' made from suspended fluorescent tubes. This is a good opportunity for students to see how an artist responds to a space, and see a new and exciting work by one of New Zealand's leading senior artists. A practical session can involve students using everyday objects to create sculptures which will then be viewed under black light; making their sculptures glow as if emitting their own light. These works will be photographed and sent to school as a record for students of their installations. Below: installation shot of 180° x 2 Whanganui

until 29 November



2009 CAREY SMITH & CO. LTD WHANGANUI ARTS REVIEW

until 29 November

Yr 9-13

This exhibition is an annual event in our programme.

The Arts Review is an excellent opportunity for visitors to view an exciting range of work by over 140 artists working in our local region.

The exhibition features painting, photography, printmaking, sculpture and video work and includes the work of a broad range of people from our community from high school students to senior citizens.



Brit Bunkley
Distant Submarine

SECONDLIFE

7 November, 2009 – 28 February, 2010

Yr 0-13

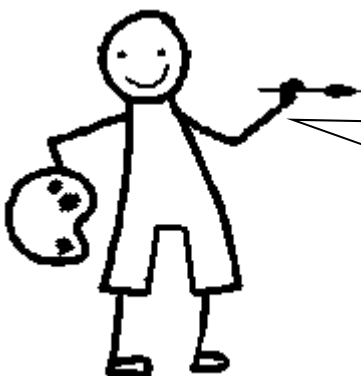
This exhibition features the work of five artists who are working with recycled materials in innovative and exciting ways. The artists are Eve Armstrong, Judy Darragh, Niki Hastings-McFall, Joanna Langford and Peter Madden. The materials used include plastic flowers, billowing plastic bags, delicately collaged small objects and bottles dressed up in silver foil and dipped in lurid paint. An excellent exhibition for showing students how found and recycled materials can be reworked to create exciting sculptural work. This is a touring exhibition from Pataka Museum of Arts and Cultures in Porirua, curated by Helen Kedgley.

Practical session can be: ▶Students work in groups to create a small installation using recycled materials which will be documented using a digital camera.

▶Students create a small sculpture using recycled materials in the style of one of the artists featured in *Secondlife* artist.



Niki Hastings-McFall
Tattoo Phil



Bring Your Students for a
Hands-On Practical Session!

Session lengths are flexible and range from 40 to 120 minutes to suit student needs and requirements.

Contact Sietske Jansma, Education Officer (06) 349 0543 ext 8276
Email: sietskej@sarjeant.queenspark.org.nz www.sarjeant.org.nz