

# EDUCATION

TERM Two: 2 May - 8 July 2016

## Yrs 7-13

### THE TOTE BAG PROJECT! *until the tote bags are gone!*

Plastic bags play a huge role in degrading our environment. Come learn about the history and effects of the single-use plastic bag and then design and screenprint your own attractive and reusable cotton tote bag. *\*this programme has been hugely popular so be sure to book your place!* Yrs 7-13

Curriculum links: Visual Arts, Science, Social Sciences, Health and Physical Education.



### 2016 Belton, Smith & Associates Ltd Whanganui Arts Review 4 March - 5 June

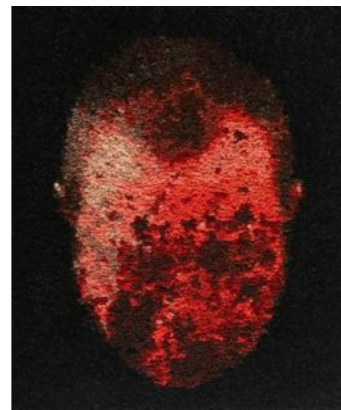
This exhibition is an excellent opportunity for students to see the wealth of creative talent that the Whanganui region has to offer. It features work in a variety of media from a broad range of people, from high school students to senior citizens. There are lots of artworks to view - from a Kunekune pig made out of drift wood to the longest necklace you'll ever see and a portrait made entirely from wool.

#### Hands-on practical sessions:

##### Green Hair, Blue Hair? Yrs 7-13

Students will focus on the different portraits in the show. We will discuss the colours and techniques that have been used by the artists. Pupils will then paint an acrylic portrait focusing on colour mixing and the use of unrealistic colours for a fun and expressive result.

Curriculum links: Visual Arts.



Mark Rayner  
Self-Portrait

### Glen Hayward: Super ordinary 14 May - 4 September

New and selected wood carvings by Glen Hayward who was artist-in-residence at Tylee Cottage in late 2014. Hayward's meticulous works are surreal, humorous and intriguing, encouraging the viewer to reassess everyday objects that are often overlooked.

#### Artist Talk!!! Yrs 7-13

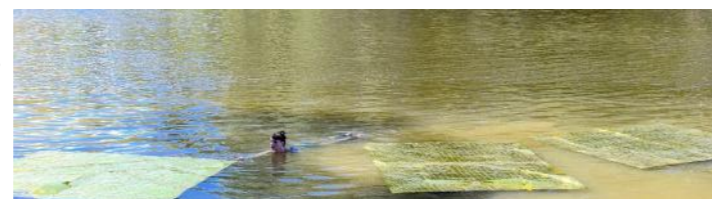
Glen is a former arts tutor at Elam, AUT, MIT and Northtec. An engaging speaker, he will inspire students about the art making journey and creative process.



Glen Hayward  
Two works from River Glean, 2015-2016

### Still Water Goes Stagnant 7 May - 31 July

The exhibition includes new video work by New Zealand artists Kate Woods and Brydee Rood alongside the Indonesian collective Tromarama. Brydee Rood, an Auckland based performance artist investigates environmental themes. For this exhibition she made a new work where she floated with survival blankets on the Whanganui River. Her work speaks to the state of emergency faced by many rivers across the world and our role as poisoners and potential saviours.



Brydee Rood  
River Survival Series: Whanganui River Gold Waters 2016  
performance/video installation

Great for students studying **MOVING IMAGE!** Curriculum links: Visual Arts, Science, Health and Physical Education.

**Staged Photography**- Local professional photographer Leigh Mitchell-Anyon leads this session along with Andrea Gardner, Sarjeant Gallery educator.

Students view a PowerPoint of artist models which explore two approaches: table top narratives and portraiture with costume elements. Students are then divided into two groups. One group focuses on portraiture using a flash lighting set up. The second group works from constant lighting, photographing a table top set-up of miniature objects in front of a painted background. Half way through the session the two groups swap places. A CD of images produced by students is delivered to the school after the session. This session is available only on Mondays and Tuesdays and is approximately 1-2 hours long. Yrs 9-13

Curriculum links: Visual Arts.



Leigh Mitchell-Anyon  
Still from "The Day After Tomorrow", 2004; [and]  
Boxing Day Tsunami. From the series Souvenirs  
for the New Millennium

### Curiosities Until June 11

Come and view some intriguing works from our collection. Of particular interest is a wonderful large painting by Bill Hammond called *Living Large No.5*. This mysterious work features surreal bird people and furniture in a dark landscape.

#### Hands-on practical sessions:

##### Birds in Clay Yrs 7-13

After viewing art works featuring birds, students will use clay to sculpt their own bird head or a bird inspired clay vessel. Works will be returned to school after being bisque fired.

Curriculum links: Visual Arts, Science.



Bill Hammond  
Living Large No. 5

### SEE WHAT I CAN SEE: New Zealand Photography for the young and curious

Discovering New Zealand Photography

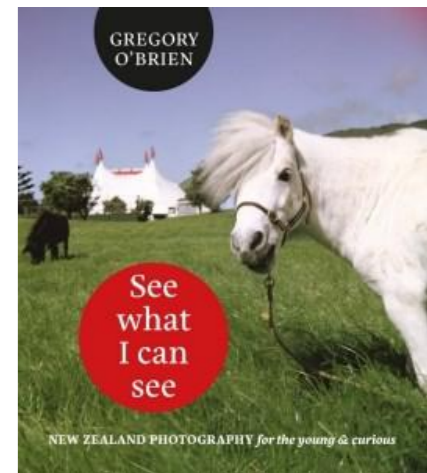
#### 18 June - 11 September

This exhibition is a celebration of that remarkable, well-travelled invention, the camera, the New Zealand that it captured and the artists who wielded it. This show is a companion to the 2015 book *See what I can see: New Zealand Photography for the young and curious* written by Gregory O'Brien.

In a world saturated with photographs, from newspapers, social media and selfies this exhibition encourages us to take another look at photography and the role it plays in our everyday lives. We will explore the questions— What is a photo? What does it tell us? How does it relate to the well known saying 'a picture tells a thousand words'?

#### Hands-on practical sessions: Yrs 7-13

Focusing on portraits students will design their own self portrait using a variety of props so that their photograph tells a story about themselves. Students will be photographed and their photos will be printed. **\*Each school participating in this programme will receive a FREE copy of the book 'See what I can see', by Gregory O'Brien for their library.** Curriculum links: Visual Arts, Social Sciences, Health and Physical Education.



#### REMINDER!

All programmes are flexible and can range from a talk/discussion (40-60minutes) to sessions that include a hands-on component (60-90minutes). All hands-on practical sessions are optional!

Education Programmes/Services are **FREE!** and are funded by the **Ministry of Education Learning Outside the Classroom initiative (LEOTC) & Whanganui District Council**