

EDUCATION

TERM Two: 2 May - 8 July 2016

Contact: Education Officers
Sietske Jansma or Andrea Gardner
(06) 349 3276
Email: education@sarjeant.org.nz

ANZAC Month of May

Students will hear stories and see historical photographs about the dogs, horses and pigeons that were involved in the WWI war effort. They will then draw a wartime animal using oil pastels, markers and dye. When dry, their individual drawings can be assembled on a long decorative bunting that can be taken back to school for the classroom. **Yrs 1-8**

Curriculum links: Visual Arts, Social Sciences.



Example

2016 Belton, Smith & Associates Ltd Whanganui Arts Review 4 March - 5 June

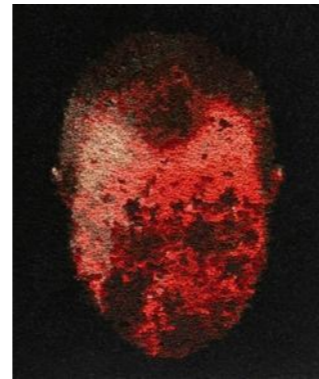
This exhibition is an excellent opportunity for students to see the wealth of creative talent that the Whanganui region has to offer. It features work in a variety of media from a broad range of people, from high school students to senior citizens. There are lots of artworks to view - from a Kunekune pig made out of drift wood to the longest necklace you'll ever see and a portrait made entirely from wool.

Hands-on practical sessions:

Green Hair, Blue Hair? Yrs 1-8

Students will focus on the different portraits in the show. We will discuss the colours and techniques that have been used by the artists. Pupils will then paint an acrylic portrait focusing on colour mixing and the use of unrealistic colours for a fun and expressive result.

Curriculum links: Visual Arts.



Mark Rayner
Self-Portrait

Curiosities Until June 11

Come and view some intriguing works from our collection. Of particular interest is a wonderful large painting by Bill Hammond called *Living Large No.5*. This mysterious work features surreal bird people and furniture in a dark landscape.

Hands-on practical sessions:

Birds in Clay Yrs 1-8

After viewing art works featuring birds, students will use clay to sculpt their own bird head. These sculptures can be hung on the wall after they have been fired. Curriculum links: Visual Arts, Science.



Example

Glen Hayward: Super ordinary 14 May - 4 September

New and selected wood carvings by Glen Hayward who was artist-in-residence at Tylee Cottage in late 2014. Hayward's meticulous works are surreal, humorous and intriguing, encouraging the viewer to reassess everyday objects that are often overlooked.

Hands-on practical sessions:

Transformer Drawings Yrs 3-8

Students will view Glen's sculptural works, focusing on how an object can be replicated in a playful and skilful manner. They will then create a tonal drawing which combines realism and observation skills with the opportunity to be wildly imaginative. These drawings are fun and often very humorous! This lesson can also inspire creative writing projects back at school. Curriculum links: Visual Arts.



Glen Hayward
Two works from *River Glean*, 2015-2016

THE TOTE BAG PROJECT! until the tote bags are gone!

Plastic bags play a huge role in degrading our environment. Come learn about the history and effects of the single-use plastic bag and then design your own attractive and reusable cotton tote bag.

**this programme has been hugely popular so be sure to book your place! Yrs 1-8*

Curriculum links: Visual Arts, Science, Social Sciences, Health and Physical Education.



Still Water Goes Stagnant 7 May - 31 July

The exhibition includes new video work by New Zealand artists Kate Woods and Brydee Rood alongside the Indonesian collective Tromarama. Brydee Rood, an Auckland based performance artist investigates environmental themes. For this exhibition she made a new work where she floated with survival blankets on the Whanganui River. Her work speaks to the state of emergency faced by many rivers across the world and our role as poisoners and potential saviours.

Hands-on practical sessions: Yrs 4-8

Students will make a celebratory artwork raising awareness of the health and beauty of our river using mixed media including a survival blanket (aluminised polyester). This lesson focuses on environmental issues.

Curriculum links: Visual Arts, Science, Health and Physical Education.



Brydee Rood

River Survival Series: Whanganui River Gold Waters 2016 performance/video installation

Puanga Month of June

Come and celebrate the Maori New Year throughout the month of June.

Hands-on practical sessions

Painting the Night Sky Yrs 1-8

Puanga is a time of admiring the beauty of the stars. Come see how artists have painted the night sky. Then paint your own night scene (city or countryside) under a starry night sky using watercolour techniques.

Printmaking Yrs 1-8

Students draw their own night scene and then print it using black ink on coloured paper. Curriculum links: Visual Arts, Social Sciences, Health and Physical Education.



Henri Edmond Cross
Landscape with Stars

SEE WHAT I CAN SEE: New Zealand Photography for the young and curious

Discovering New Zealand Photography

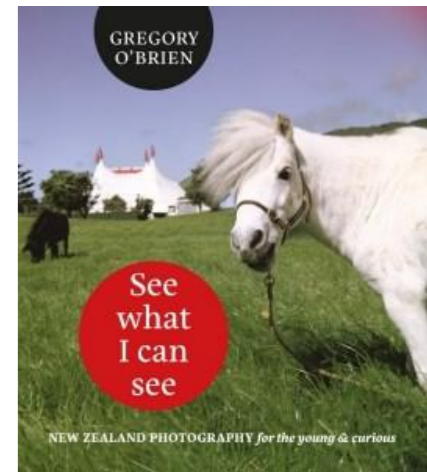
18 June - 11 September

This exhibition is a celebration of that remarkable, well-travelled invention, the camera, the New Zealand that it captured and the artists who wielded it. This show is a companion to the 2015 book *See what I can see: New Zealand Photography for the young and curious* written by Gregory O'Brien.

In a world saturated with photographs, from newspapers, social media and selfies this exhibition encourages us to take another look at photography and the role it plays in our everyday lives. We will explore the questions— what is a photo, what does it tell us and how does it relate to the well known saying 'a picture tells a thousand words'.

Hands-on practical sessions: Yrs 1-8

Focusing on portraits students will design their own self portrait using a variety of props so that their photograph tells a story about themselves. Students will be photographed and their photos will be printed. **Each school participating in this programme will receive a FREE copy of the book 'See what I can see', by Gregory O'Brien for their library.* Curriculum links: Visual Arts, Social Sciences, Health and Physical Education.



Education Programmes/Services are **FREE!** and are funded by the **Ministry of Education Learning Outside the Classroom initiative (LEOTC) & Whanganui District Council.**