

EDUCATION

TERM One: 1 February - 15 April 2016

SPECIAL TOTE BAG PROJECT!

all of term 1 and 2 or until the tote bags are gone!

Plastic bags play a huge role in degrading our environment. Come learn about the history and effects of the single-use plastic bag and then design your own attractive and reusable cotton tote bag.

Curriculum links: *Visual Arts, Science, Social Sciences, Health and Physical Education.*



Screen printing
Yrs 1-13



Drawing
Yrs 1-13

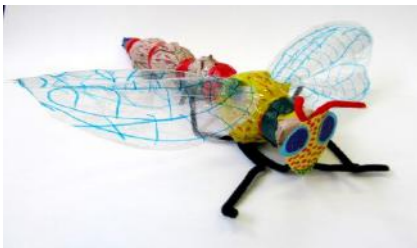


Drawing and painting
Yrs 3-13

Bushy Park Sanctuary

In conjunction with the Whanganui Regional Museum educator Margie Beutrais and Bushy Park volunteers.

Visit Bushy Park with the gallery and museum educators; have an art and science experience in nature. Art sessions can include any of the following: landscape painting with watercolour, 3D construction of dragonflies (or spiders), observational plant drawing, bird and bug drawing (to become a large group work attached to a forest scene background) or an art activity designed to complement your specific curriculum needs. You can also come to the gallery for a variety of pre and post Bushy Park sessions which could involve printmaking, sculpture, painting, ceramics or mixed media.



Sample: 3D Dragonfly

Note: Education visits to Bushy park cost \$2 per student. Available throughout the year.

Curriculum links: *Visual Arts, Science, Social Sciences, Health and Physical Education.*



Vivian Smith
Untitled (Leaf)

2016 Belton, Smith & Associates Ltd Whanganui Arts Review

4 March— 5 June

This exhibition is an annual event in our programme. Featuring work in a variety of media from a broad range of people living in the Whanganui region, from high school students to senior citizens. This exhibition is an excellent opportunity for students to see the wealth of creative talent that their local community has to offer.

Hands-on practical sessions:

Session can be printmaking, painting, drawing or sculpture and will focus on a number of works in this exhibition.

Curriculum links: *Visual Arts*

EMMA CAMDEN: NOW

New and selected cast glass works

until 20 March

Emma Camden is one of New Zealand's best artists working in the medium of cast glass. This exhibition brings together six exciting new works alongside a selection of works from the early 2000s to 2014. Emma's large works are inspired by architecture. Stairs, towers, viaducts, pyramids, passages and chambers can be found in the exhibition. This is a great opportunity to see wonderful glass works that capture light and shadow; students can explore form, light and dark, negative and positive spaces and think about architectural forms and what they mean.



Emma Camden
Untitled, 2015



Card sculpture example

Hands-on practical sessions:

Card Sculptures Yrs 4-8

Make a card sculpture, inspired by her work, which has arches, stairs, windows, and a small figure which can explore these spaces.

Curriculum links: *Visual Arts*

Crayons! Yrs 1-8

Emma Camden uses moulds to create her sculptures. Learn about the mould making process. Make your own shaped crayons using hot wax and a mould made of clay.

Curriculum links: *Visual Arts, Technology*

EDITH COLLIER: Coastal Communities

13 February - 1 May, 2016

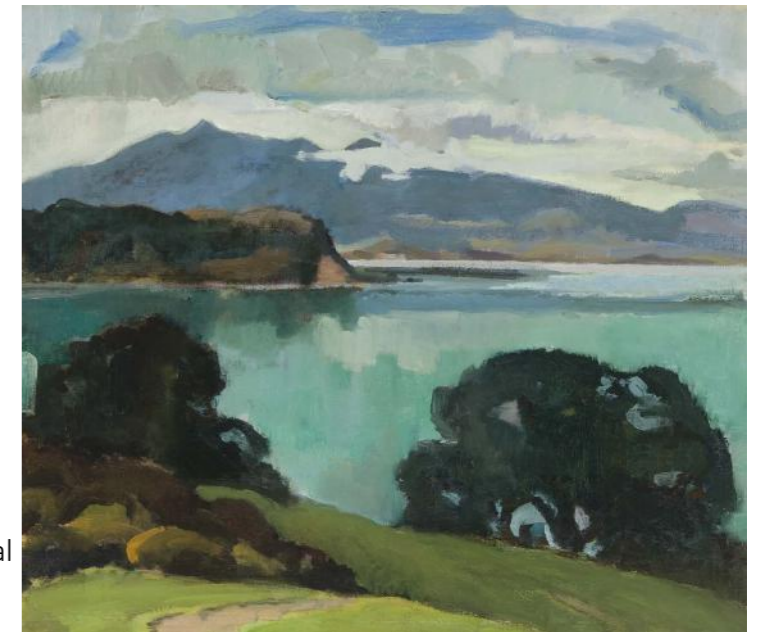
Edith Collier (1885-1964) is one of Whanganui's most celebrated artists and this exhibition brings together a selection of works that she produced in response to three coastal communities where she spent periods of time: Bonmahon, Ireland; St Ives in Cornwall, England; and Kawhia, New Zealand. It was in these locales that Collier was at her most productive and the works are some of the most memorable of her oeuvre.

Hands-on practical sessions:

Seaside Splendour! Yrs 3-13

Come view this lovely exhibition and then create your own acrylic painting of the sea and the land with a special focus on how to mix beautiful green and blue tones.

Curriculum links: *Visual Arts*



Edith Collier
Still Waters, Kawhia Harbour



27 February— 6 March

We will be offering programmes out at Castlecliff Beach throughout this week. Please contact us for more information.

Education Programmes/Services are **FREE!** and are funded by the **Ministry of Education Learning Outside the Classroom initiative (LEOTC) & Whanganui District Council.**