

EDUCATION

Term One: 28th January—12 April 2019

Contact: Education Officer

Sietske Jansma

(06) 349 3276

Email: education@sarjeant.org.nz

2019 pattillo whanganui arts review

9 March - 12 June

The annual Whanganui Arts Review is the longest running event of its type in the country and is a valued component of the Sarjeant's exhibition programme. Featuring work in a variety of media from a broad range of people living in the Whanganui region, from high school students to senior citizens. This exhibition is an excellent opportunity for students to see the wealth of creative talent that their local community has to offer.



Hands-on practical sessions:

Come play with colour! -Years NE - 6

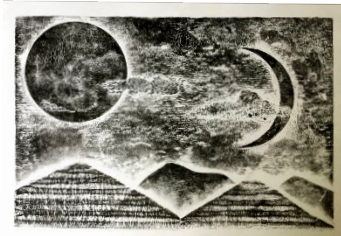
This is a great introduction to colour and colour mixing. Students will draw a large creature of their choice, these could be imaginary or real. They will divide up their creature into many different areas, they could be stripes, spots or random designs. Each space will be painted with a new colour that they have created. They will experiment by mixing primary colours together and adding white or black paint to change the tone. The result will be a beautiful multi-coloured creature showing their journey of colour exploration.



Detail from a group work by students
from the exhibition *Home Beautiful*
2013

Collagraphy -Years NE - 8

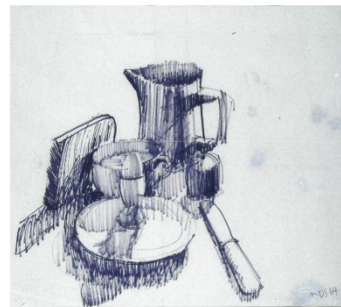
Students learn how to make a collagraph by building up a printing plate using cardboard, glue, biro and textured media. They will cover their plate with tinfoil before rolling on the ink and printing it in the jack-press.



Collagraph sample

Observational drawing -Years NE -13

Students will participate in a range of quick drawing games/exercises followed by some sustained observational drawing. We can work with a theme of your choice, plants, flowers, still life etc.



Michael Smither
Still Life Drawing 1964

How do you curate an exhibition? -Years 7-13

Curator and Public Programmes Manager Greg Donson will give a talk in the gallery space on how he curates an exhibition. From forming the idea, finding and choosing the artworks and installing the exhibition. This will give students an insight into what a curator does.

This session can include a practical component where students work in groups to create an exhibition using a range of artworks (printouts) from our collection. They will need to think of a theme, a title, exhibition layout and an introduction to their exhibition.

Anthony Davies: Selected works 2007-2019

23 March - 26 May

Whanganui based artist Anthony Davies has been using the skilled media of printmaking over the course of his artistic career. Davies subject matter has always been drawn from his environment, but more importantly his keen observations of the raw state of society. Recurrent themes gleaned from media reports in the newspaper, on radio and television, such as poverty, crime, surveillance, protest, rebuilding and utopia, inform his works. Davies sees and transcribes with a compassionate and critical eye; he offers no answers, just the bare truth.

Davies works are an excellent opportunity for students to observe how society and current events can be depicted in the medium of print.



Anthony Davies
Twin Towers - Wanganui; no.10

Hands-on practical sessions:

Whanganui Landmarks -Years NE - 13

Students will view and discuss the exhibition concentrating on some of Davies' linocuts. They will then create their own printing plate using biro on card focusing on the theme of Whanganui landmarks. We will concentrate on creating images with crisp lines and print them in our jack-press.

Artist talk and/or workshop -Years 9-13

Students view the exhibition followed by an artist talk, this can be combined with a simple woodblock print workshop. Session length flexible to suit your students.

Kate Fitzharris

16 March - 9 June

Dunedin based ceramicist Kate Fitzharris was Artist-in-Residence at Tylee cottage in early 2018. During her time in Whanganui Kate asked the community to participate in a project where they would share with her stories associated with ceramic objects that they owned. From these Fitzharris began to create a 'library of things' which brought together unlikely and surprising combinations of forms and narratives. Fitzharris works on a small scale and brings together figurative and inanimate objects in a magical way in her post-residency exhibition, that weaves together those original stories and her own observations of her surroundings and objects from her time in Whanganui.



Kate Fitzharris
Blue & White Cup

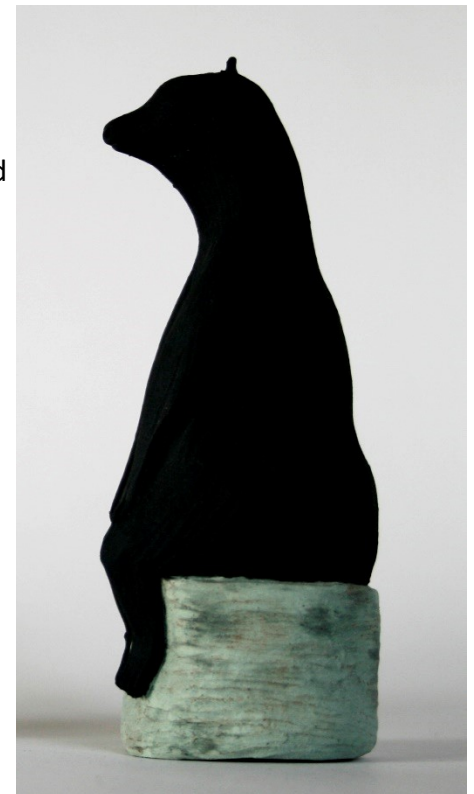
Hands-on practical sessions:

Little Characters -Years NE -13

Students will create their own character out of clay, these could be animal, human or imaginative. They might belong to a story that is dear to their heart or from a memory.

Small Vessels -Years 4 -13

Students create their own small decorative cup and use a coloured underglaze to paint a scene of their choice onto their vessel.



Kate Fitzharris
Bear

Education Programmes/Services are **FREE!**